

SYSTEM OVERVIEW

STEEL FRAMED DEFENDER HINGED GLASS FIRE DOOR EI90 [-/90/30]

Description

Glass Fire door incorporating the RP Technik Hermetic EI90 profile and Defender EI fully insulating safety glass.

Applications

Used where a high degree of protection is required for exit pathways or where specialized equipment cannot be sprinkler protected. Residential complexes, homes, offices, hospitals, school's, car parks, shopping centers, computer rooms, offices & high rise apartments.

How to Specify

Fire door shall be Defender Fire door System comprising proprietary RP Technik steel EI90 frame system and Defender EI fully insulating safety glass. The entire system must be certified as having been assessed to AS1530.4 and installed in accordance with test prototype. Installation must be carried out by an installer registered with and approved by the manufacturer, Australian Fire Control. Phone: [08] 9399 6957 Email: sales@australianfirecontrol.com.au.

Defender for interior applications

Defender special glass for interior applications is a clear composite glass with fire resistant properties. Depending on the design, it is manufactured from at least two float glass panes with transparent, fire resistant interlayer.

Defender for exterior applications

Defender special glass for exterior applications is a clear composite glass with fire resistant properties. In addition to the float glass panes with transparent fire resistant interlayers, which foam up in case of fire, the special glass is manufactured with an external laminated pane to reduce UV degradation of the intumescent interlayer.

Function

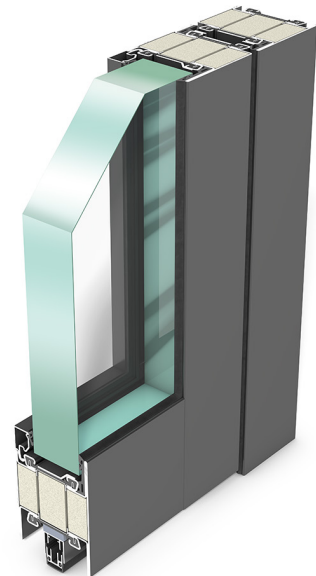
Fire resistant glazing with Defender special glass acts as a barrier against the spread of fire, smoke and heat radiation in the event of fire. The float glass pane facing the fire shatters. The enclosed, transparent fire resistant layers foam up and form an opaque heat shield, which prevents the passage of heat radiation in case of fire. The requirements of an EI glazing are met, if the temperature rise on the non-fire side does not exceed 140 °C (average) or 180°C in any one position. Depending on the thickness of the composite, the fire resistance time can be influenced accordingly.

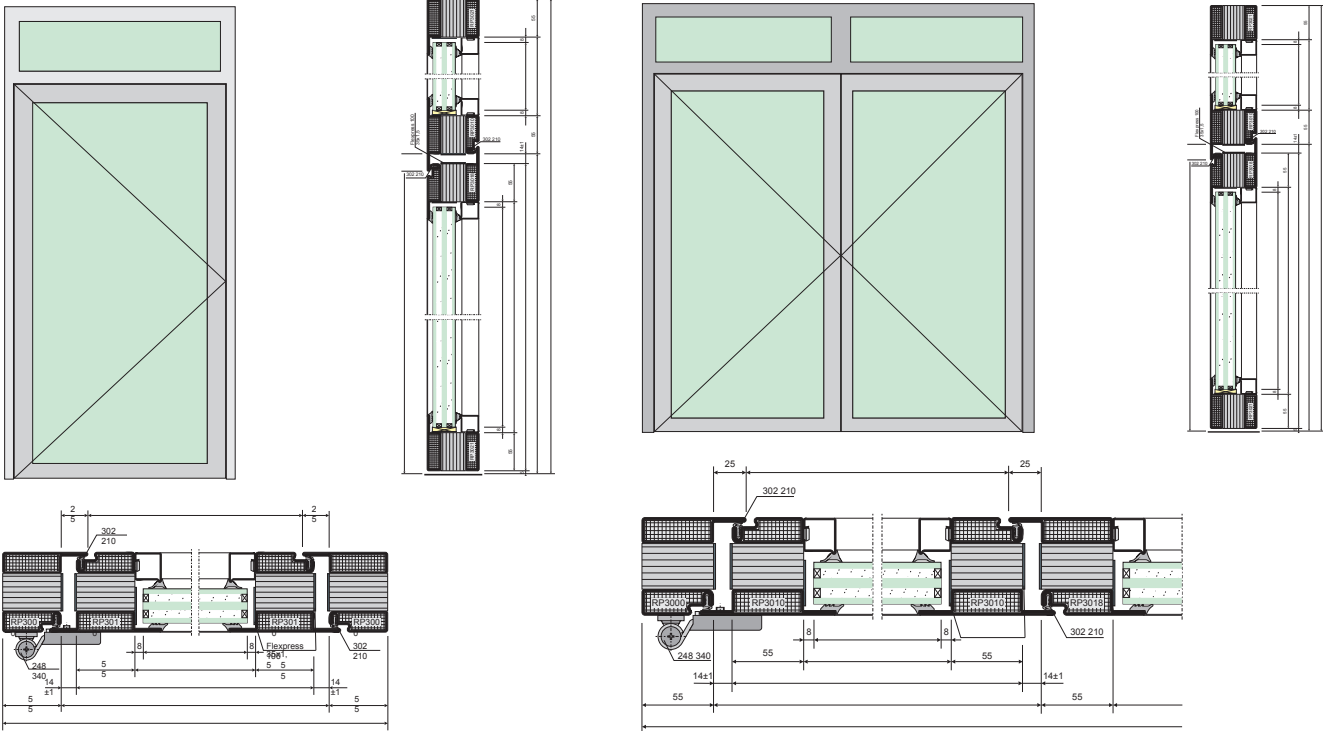
KEY FEATURES

- HIGH fire rating
- Architectural steel framing
- Crystal clear views
- Fully certified to Australian Standards
- Low maintenance
- Durable design
- Framing available in Timber & Aluminum

GLASS INFORMATION

- STC Rating: 44dB
- Light Transference: 84%
- Ug Value: 4.2 W/m²K
- Ambient Temp Range: -40°C to +50°C
- Weight: 86 kg/m² > 93 kg/m²
- Thickness: 37mm [Internal]
Thickness: 40mm [External]
- Maximum sizes:
Double door: 2750 [h] x 1275/1275 [w]
Single door: 2750 [h] x 1400 [w]





Australian Fire Control Pty Ltd

Phone: [08] 9399 6957

Email: Sales@AustralianFireControl.com.au

Perth Office: 17 Williams Road Kelmscott WA 6111

Melbourne Office: Level 3, 480 Collins Street, Melbourne VIC 3000

System Overview

STEEL FRAMED DEFENDER FIRE GLASS DOOR EI90 [-/90/30]

Document Number: EI90D-2020/01