



SYSTEM OVERVIEW

DEFENDER OVERHEAD ROLLING DOOR E30 [-/30/-] [BAL-FZ]

Description

Extensively fire tested with direct flame contact for fire ratings in excess of 30 minutes (-/30/-) in accordance with AS1530.4. The fabric is coiled up inside a powder coated galvanized steel head box in one piece by means of patented bearings providing a continuous length. Actuation of the curtain is achieved through manual closure.

Applications

Buildings located in BAL Flame Zone areas.

How to Specify

Window/door shall be protected by a Defender Overhead Rolling Door, comprising proprietary Australian Fire Control system. The entire system must be certified as having been assessed to AS1530.4 and installed in accordance with test prototype. Installation must be carried out by an installer registered with and approved by the manufacturer, Australian Fire Control. Phone: [08] 9399 6957 Email: sales@australianfirecontrol.com.au.

What is BAL FZ?

Direct flame contact from fire front & radiant heat exposure greater than 40kW/m²

Finish

Powdercoat to any desired DULUX Duralloy colour.

KEY FEATURES

- Fully certified to Australian Standards
- Low maintenance
- Clear views
- Compact & durable design
- **Made in Australia by a 100% owned and operated Australian company.**

Maximum size [manual]: 3000 x 3000 [HxW]
Larger motorized system available.

Compliance based upon AS3959.2018 Clause 9.5.4 (b) (i) (A) having an FRL of at least -/30/- and with setback distance of 10.m from classified vegetation.

The peace of mind to leave your home during a bushfire.



Install over almost any door or window system.



WINDOWS



HINGED DOORS



SLIDING DOORS



BIFOLD DOORS

Australian Fire Control Pty Ltd

Phone: [08] 9399 6957

Email: Sales@AustralianFireControl.com.au

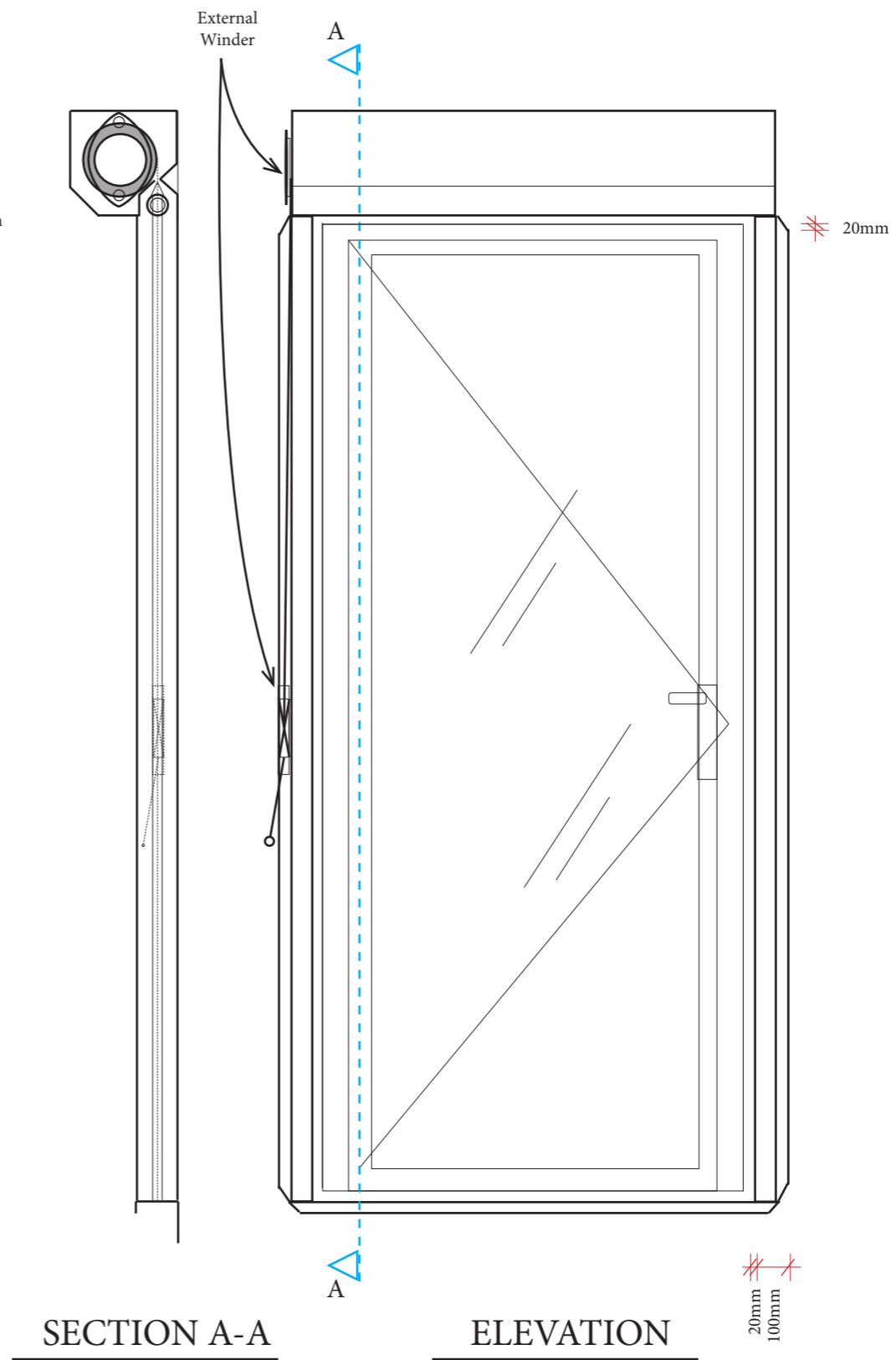
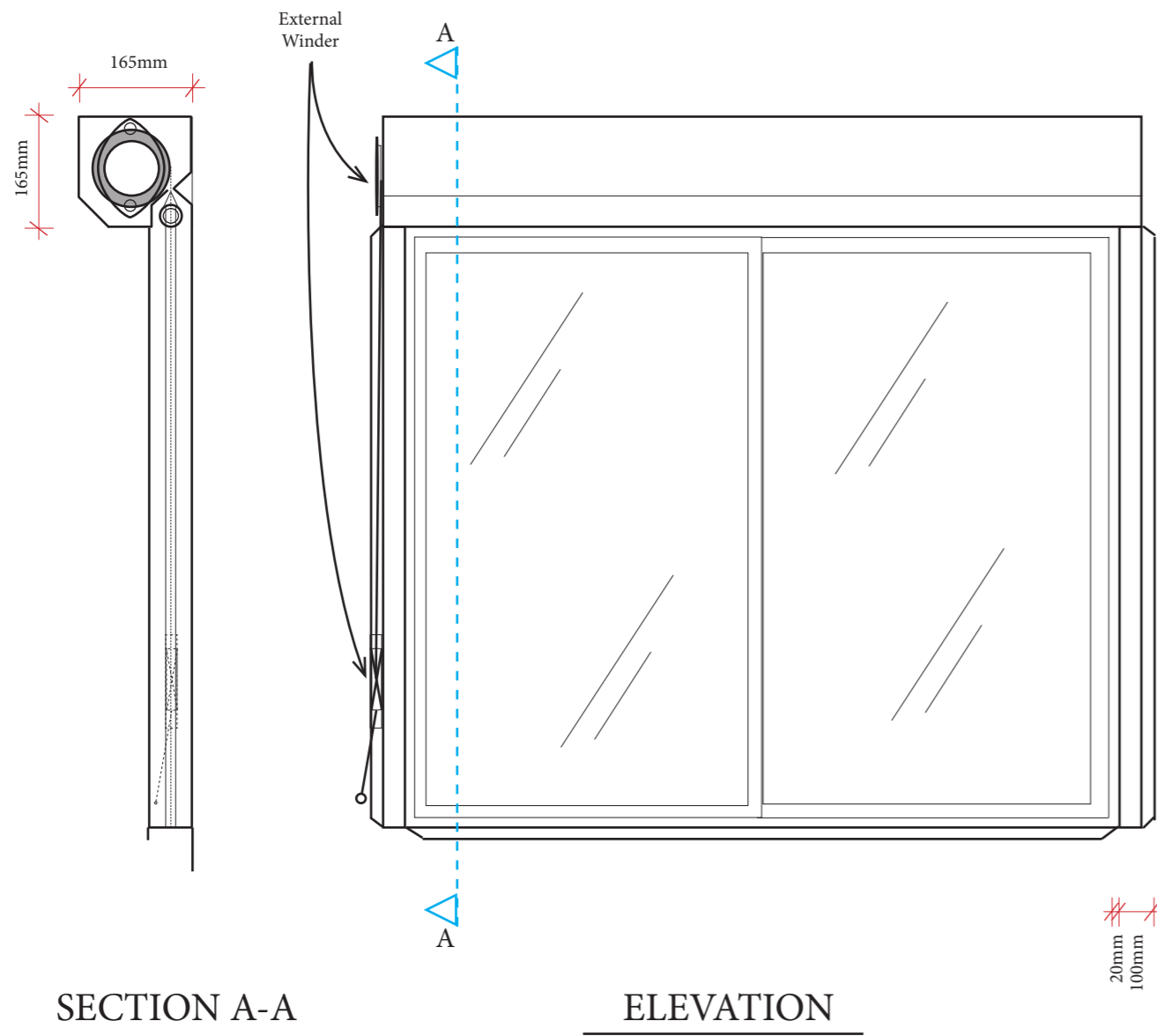
Perth Office: 17 Williams Road Kelmscott WA 6111

Melbourne Office: Level 3, 480 Collins Street, Melbourne VIC 3000

System Overview

DEFENDER OVERHEAD ROLLING DOOR E30 [-/30/-]

Document Number: E30-BALFZ2020/01



Commercial In Confidence.
 This document is commercially sensitive and must NOT be disseminated to a third party without first obtaining written permission from Australian Fire Control Pty Ltd.



Australian Fire Control Pty Ltd
 Address: 17 Williams Road Kelmscott WA 6111
 Phone: [08] 9399 6957
 Email: Sales@AustralianFireControl.com.au
 Web: www.AustralianFireControl.com.au

TYPICAL BAL FZ Overhead Rolling Door with external winder.

SCALE: N.T.S
 Date: 10.06.2020
 Page 1 of 1
 Drawn by: Jessica John
 Drawing Number: BALFZ-ORD-E-001

NOTES:
 Internal winder system available.
 Components powdercoated any standard colour and finish.

REVISIONS:
 1 - Document Created 10.06.2020