

Safeguarding Lives, Defying Blasts: The Ultimate Protection Unleashed

SYSTEM OVERVIEW

BLAST FIRE DOOR [120min FIRE RATING]

Introducing the pinnacle of security and protection: the High-Performance Solid Core Blast-FIRE-Proof Door which has been successfully approved for use for blast ratings up to 1.52 Bar & 120min Fire.

Crafted with meticulous attention to detail, this door is specifically designed to withstand the harshest forces unleashed by explosive incidents.

The solid core construction of this remarkable door ensures exceptional strength and durability, making it an ideal choice for blast-proof rooms. Each component is carefully engineered to provide maximum resistance against the intense pressure and shockwaves generated by explosions, creating a safe haven within.

What sets this door apart is its exceptional performance without the exorbitant price tag typically associated with blast-proof solutions. While other alternatives may break the bank, our commitment to affordability allows for broader accessibility to this high-end security measure.

Our team of experts has employed cutting-edge engineering techniques and industry best practices to ensure that this door meets the highest standards of security and reliability.

Rest assured, the High-Performance Solid Core Blast-Proof Door combines robustness and affordability, making it an indispensable asset for facilities requiring optimal protection against blast events. Experience peace of mind without compromising your budget, knowing that you have invested in a door that provides the utmost security for your space.

CERTIFICATION: Completed by an independent Engineer

Hardware provided by AFC: Welded Hinges

Maximum Sizes Available

Single Leaf:

3000 mm high and 1500 mm wide

Double Leaf:

3000 mm high and 1500 mm wide per door leaf

Optional Extras:

Vision Panels [max size: 450 x 350]

Doors suitable for:

Government Facilities: Secure governmental institutions, including embassies, military installations, and intelligence agencies, demand blast-rated doors to shield against potential threats.

Industrial Sites: Power plants, chemical factories, and refineries are prone to accidental explosions. Blast-rated doors offer a critical defense to protect personnel, equipment, and surrounding areas.

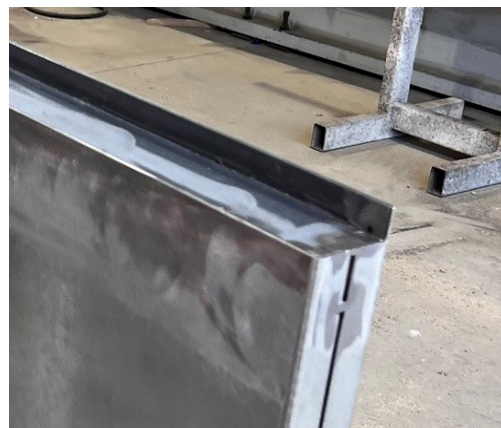
Research Labs: Advanced research facilities dealing with hazardous materials, such as biohazard or chemical labs, require blast-rated doors to mitigate the risk of accidental explosions and contain potential damage.

Data Centers: Safeguarding critical information is paramount in data centers. Blast-rated doors provide an additional layer of security to protect against intentional attacks or accidental explosions.

High-Risk Facilities: Prisons, detention centers, and judicial buildings benefit from blast-rated doors to prevent unauthorized access, reinforce security, and withstand potential threats from explosive devices.



BLAST FIRE DOOR



Unleashing Specialised Fabrication Expertise for Your Unique Needs;

Talk to us about a bespoke steel frame that would be suitable to use as a complete door system.

Approved By:



Pluto LNG onshore facility near Karratha in Western Australia

Australian Fire Control Pty Ltd

Phone: [08] 9399 6957

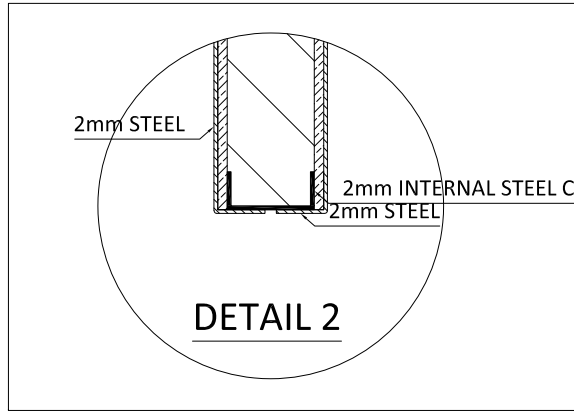
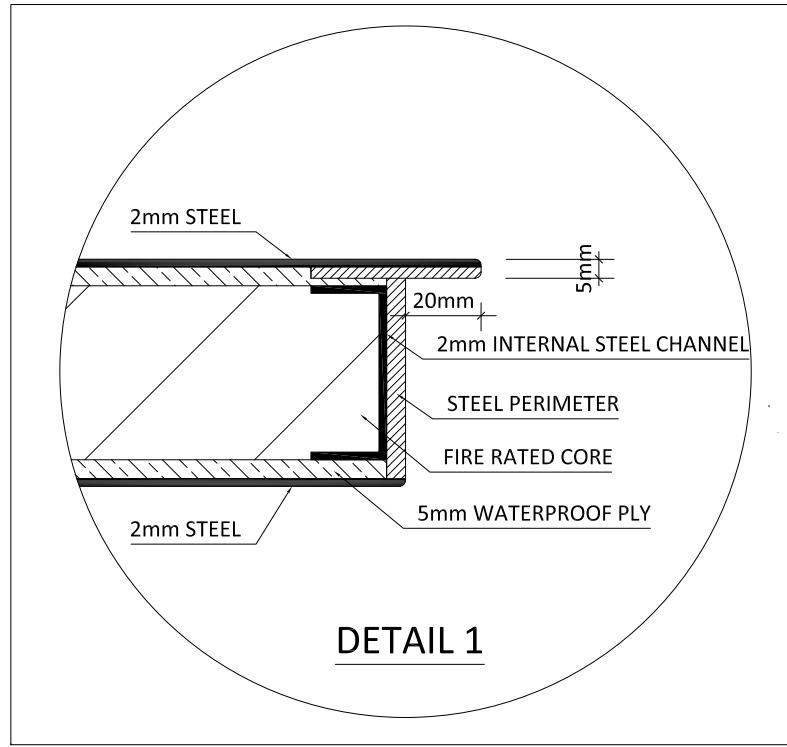
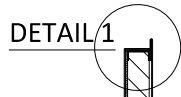
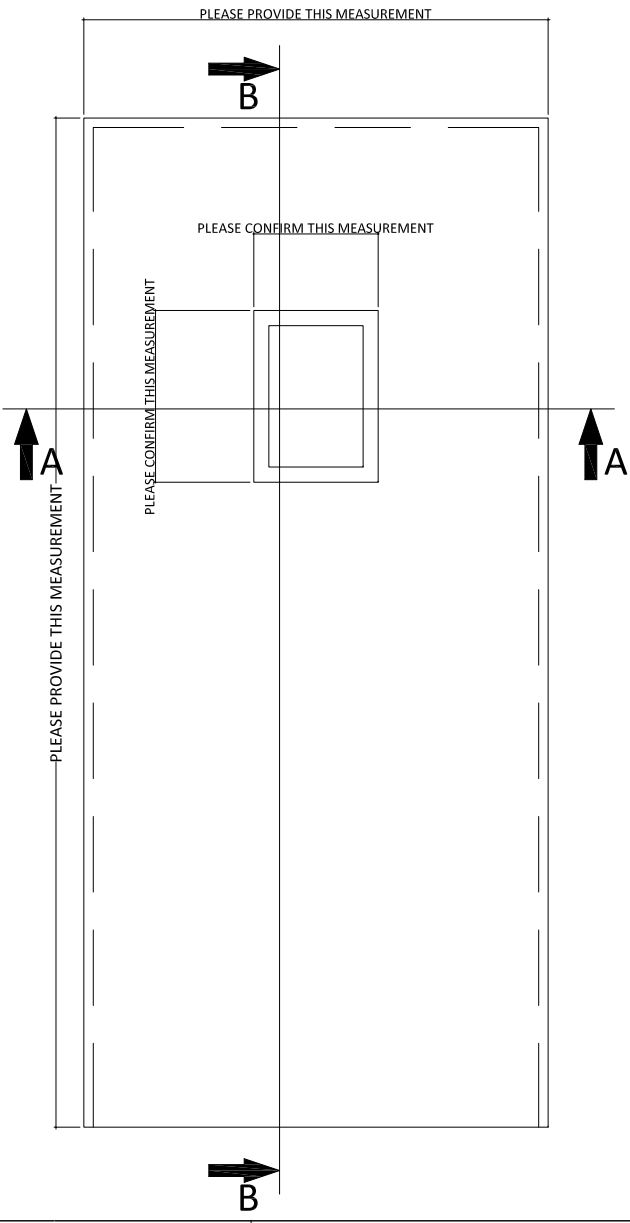
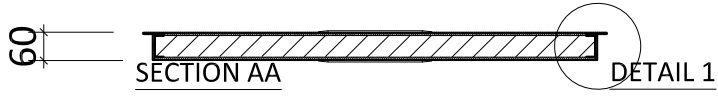
Email: Sales@AustralianFireControl.com.au

Perth Office: 17 Williams Road Kelmscott WA 6111

System Overview

BLAST & FIRE DOOR

Document Number: BLASTFIREDOOR/AFC/01



Commercial In Confidence.
 This document is commercially sensitive and must NOT be disseminated to a third party without first obtaining written permission from Australian Fire Control Pty Ltd.

AUSTRALIAN FIRE CONTROL PTY LTD
 ADDRESS: UNIT 27-73 BRAHNS ROAD KILMASNOY WA 6151
 POSTAL: PO BOX 1028 DC WA KILMASNOY 6157
 PHONE: 08 9399 4957
 EMAIL: SALES@AUSTRALIANFIRECONTROL.COM.AU
 JAN: 27597 781 081
 ACN: 145 872 859
 www.australianfirecontrol.com.au

IMPORTANT INFORMATION REGARDING THIS SHOP DRAWING.
 This is a production document based on our understanding of project requirements. It is important to note that material will be manufactured from this information. Please be aware that production will NOT commence without signed acceptance. Signed acceptance is contractual confirmation that product drawn meets with all Drawings, Specifications and Schedules for this project to the best of your knowledge.

AUSTRALIAN FIRE CONTROL PTY LTD SHOP DRAWING ACCEPTANCE:
 1: ACCEPTED, WORK MAY PROCEED
 2: ACCEPTED, WITH COMMENTS, PROCEED WITH WORK - RESUBMIT CHANGES
 3: NOT ACCEPTED, DO NOT PROCEED, REVISED AND RE-SUBMIT
 NAME: _____ POSITION: _____
 DATE: ____/____/____
 SIGN: _____

REV.	BY	DETAILS	DATE

NOTES:

Client
 Attention:

PROJECT NAME SPECIAL PERFORMANCE DOOR 74			
PROJECT Address			
DRAWING NUMBER: 1000-1210	PROJECT NUMBER:	DRAWN BY: SP	Page: 1 of 1
DATE: 12/10/20	SCALE:	REV. 1	