

SYSTEM OVERVIEW

STEEL FRAMED DEFENDER FIRE WINDOW EI60 [-/60/60]

Description

Fire window incorporating the RP Technik Hermetic EI60 profile and Defender EI fully insulating safety glass.

Applications

Used where a high degree of protection is required for exit pathways or where specialized equipment cannot be sprinkler protected. Residential complexes, homes, offices, hospitals, school's, car parks, shopping centers, computer rooms, offices & high rise apartments.

How to Specify

Fire window shall be Defender Fire Window System comprising proprietary RP Technik steel EI60 frame system and Defender EI fully insulating safety glass. The entire system must be certified as having been assessed to AS1530.4 and installed in accordance with test prototype. Installation must be carried out by an installer registered with and approved by the manufacturer, Australian Fire Control. Phone: [08] 9399 6957 Email: sales@australianfirecontrol.com.au.

Function

Fire resistant glazing with Defender special glass acts as a barrier against the spread of fire, smoke and heat radiation in the event of fire. The float glass pane facing the fire shatters. The enclosed, transparent fire resistant layers foam up and form an opaque heat shield, which prevents the passage of heat radiation in case of fire. The requirements of an EI glazing are met, if the temperature rise on the non-fire side does not exceed 140 °C (average) or 180°C in any one position. Depending on the thickness of the composite, the fire resistance time can be influenced accordingly.

Max glass sizes:

Height: 2900mm
Width: 1800mm

Also available in a BUTT-JOINT system.

Table 15 Summarised maximum permitted glazing with 5 mm butt joints in steel screens

Glass	Thickness (mm)	Height (mm)	Width (mm)	Maximum Area (m ²)	FRL
PYRANOVA® 60 S3.0 & S3.1	Minimum 23 mm	3232	1560	4.235	-/60/60

KEY FEATURES

- HIGH fire rating
- Architectural steel framing
- Crystal clear views
- Fully certified to Australian Standards
- Low maintenance
- Durable design

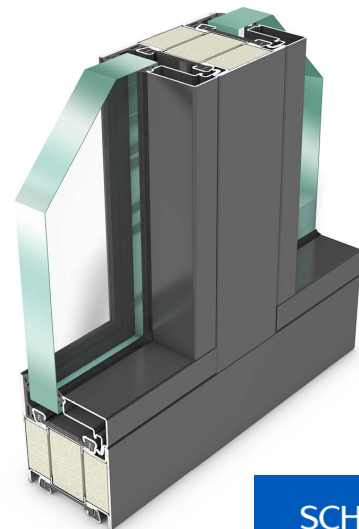
Glass details:

23mm thickness:

- Weight = 55 kg/m²
- Visible Light VLT = 0.87
- U-Value = 5.2
- SHGC = 0.76
- Rw = 41
- **Internal applications ONLY**

27mm thickness:

- Weight = 61 kg/m²
- Visible Light VLT = 0.86
- U-Value = 5.1
- SHGC = 0.73
- Rw = 41
- **External applications**



SCHOTT
glass made of ideas

Australian Fire Control Pty Ltd

Phone: [08] 9399 6957
Email: Sales@AustralianFireControl.com.au
Perth Office: 17 Williams Road Kelmscott WA 6111
Melbourne Office: Level 3, 480 Collins Street, Melbourne VIC 3000

System Overview

STEEL FRAMED DEFENDER FIRE WINDOW EI60 [-/60/60]

Document Number: EI60-2020/01

SYSTEM OVERVIEW

STEEL FRAMED DEFENDER FIRE WINDOW EI60 [-/60/60]

Sample Frame Section Through

N.T.S

